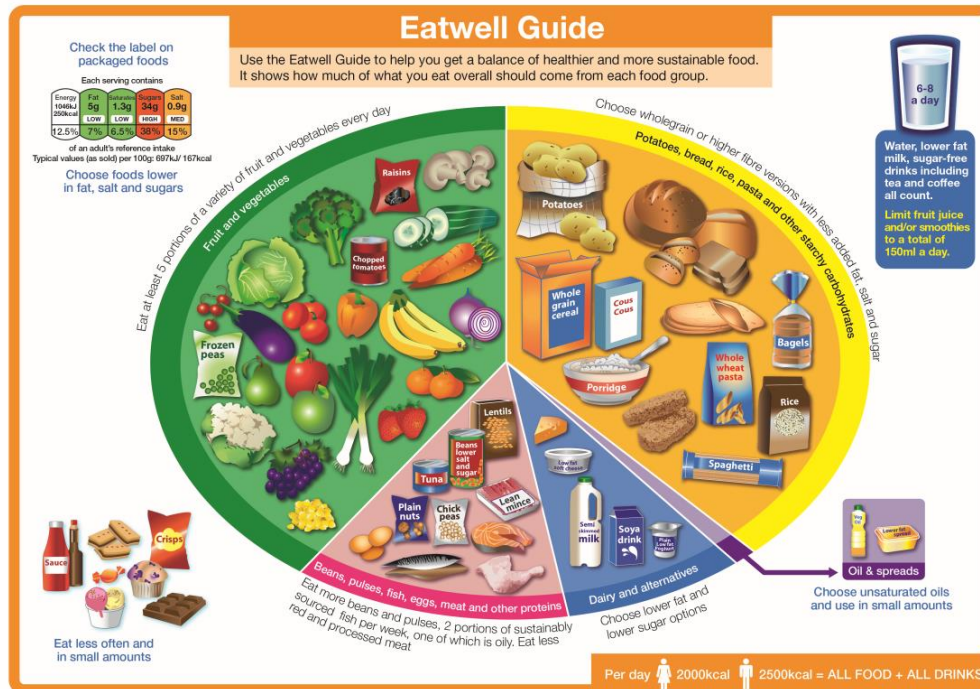


Community Paediatric Nutrition & Dietetics Service

Specialist advice for children and young people aged 0-19 years with neurodevelopmental concerns and identified nutritional problems



The Team

- Consists of:
 - 0.5 Band 8a
 - 2.5 Band 7
- Based at Cedar House St Michaels Site, Enfield, EN2 0JB.
- Telephone: 0208 702 3479.

Service Provision

- Part of Enfield Health
- Specialist dietetic advice to children, young people and their families
- Children and young people between 0-19 years who have neurodevelopmental concerns and identified health problem
- Delivered across the Borough of Enfield.

Referrals

- Neurodisabilities
- Home enteral feeding
- Faltering growth
- Obesity
- Ex-premature
- Other severe medical issues: Cardiac, Respiratory, Metabolic & Genetic diseases
- Life limiting conditions / Palliative care

Our Role

- Nutritional assessment
 - Anthropometry, clinical condition, diet history, environmental and social factors.
 - Individualised care plans based on nutritional needs.
- Multidisciplinary team working
- Integrated team working
- Liaison with GP around prescription requests
- Safeguarding of our patients

Where do we see our children, young people and families?

- Specialist schools
 - Oaktree
 - Waverly
 - West Lea
 - Durants
 - Russett
- Mainstream settings
- Home visits
- Cedar House

Who do we work with

- Parents/Carers
- Speech and language
- Occupational therapists
- Physiotherapists
- Community Children's Nurse's
- Psychologist / Psychiatrist (Child and Adolescent Mental Health Services [CAMHS])
- Paediatricians
- School staff, teaching assistants, school nurses, Special Educational Needs Co-Ordinator's (SENCO)
- Health visitors
- Dietitians in other boroughs or Acute hospitals
- Feeding company
- GP

Contact List

- **Dietitians contact details:**
 - Tel: 0208 702 3479
 - Fax: 0208 364 6442
 - Email:
 - Jasweer.Singh1@nhs.net
 - Craig.VanWyk@nhs.net
 - Sara.Haussmann@nhs.net
 - Rachel.hutchison1@nhs.net